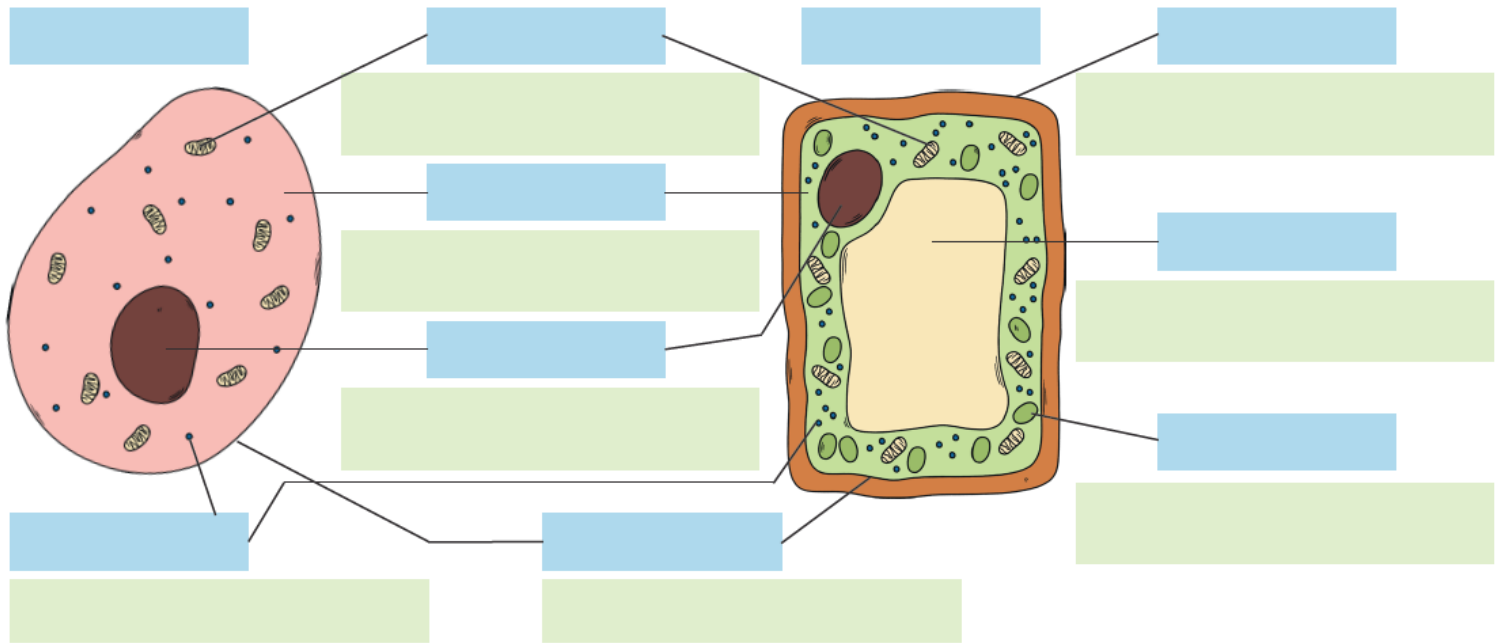


## Parts of a Cell Cut and Stick

Cut and stick the labels in the correct place.



### Comparing and Contrasting Cells

Which organelles are found in both typical animal and plant cells?  
Which organelles can only be found in a typical plant cell?

1 of 3

## Parts of a Cell Cut and Stick

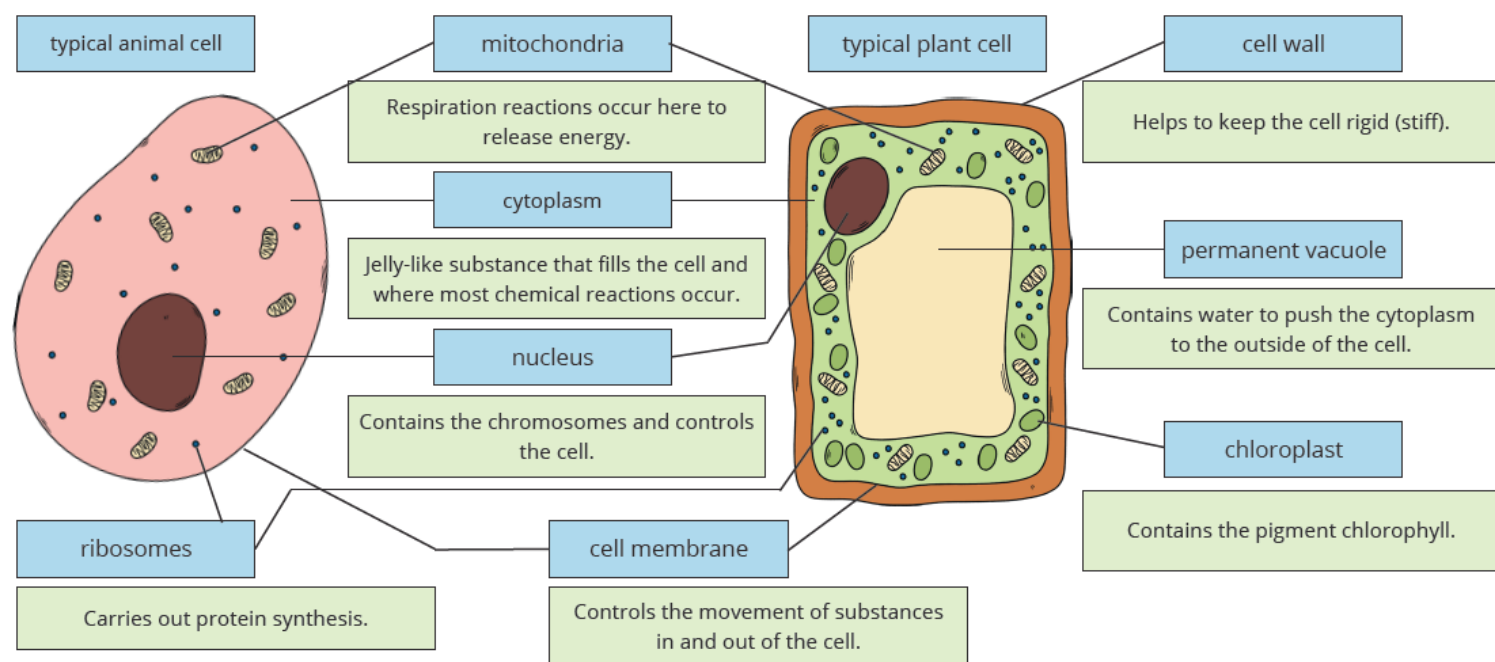
Cut and stick the labels in the correct place.  
Then match up the part of the cell to the correct function.

permanent vacuole	Helps to keep the cell rigid (stiff).
typical animal cell	Controls the movement of substances in and out of the cell.
typical plant cell	Contains the chromosomes and controls the cell.
nucleus	Respiration reactions occur here to release energy.
cell membrane	Jelly-like substance that fills the cell and where most chemical reactions occur.
mitochondria	Contains the pigment chlorophyll.
cytoplasm	Contains water to push the cytoplasm to the outside of the cell.
cell wall	Carries out protein synthesis.
chloroplast	
ribosomes	

2 of 3

# Parts of a Cell Cut and Stick - Answer Sheet

Cut and stick the labels in the correct place.



## Comparing and Contrasting Cells

Which organelles are found in both typical animal and plant cells? **mitochondria, cytoplasm, nucleus, ribosomes and cell membrane.**

Which organelles can only be found in a typical plant cell? **cell wall, permanent vacuole, chloroplast**