

Calculating with time in football

Level 1

Maths resource

Upper KS2: Ages 9-11

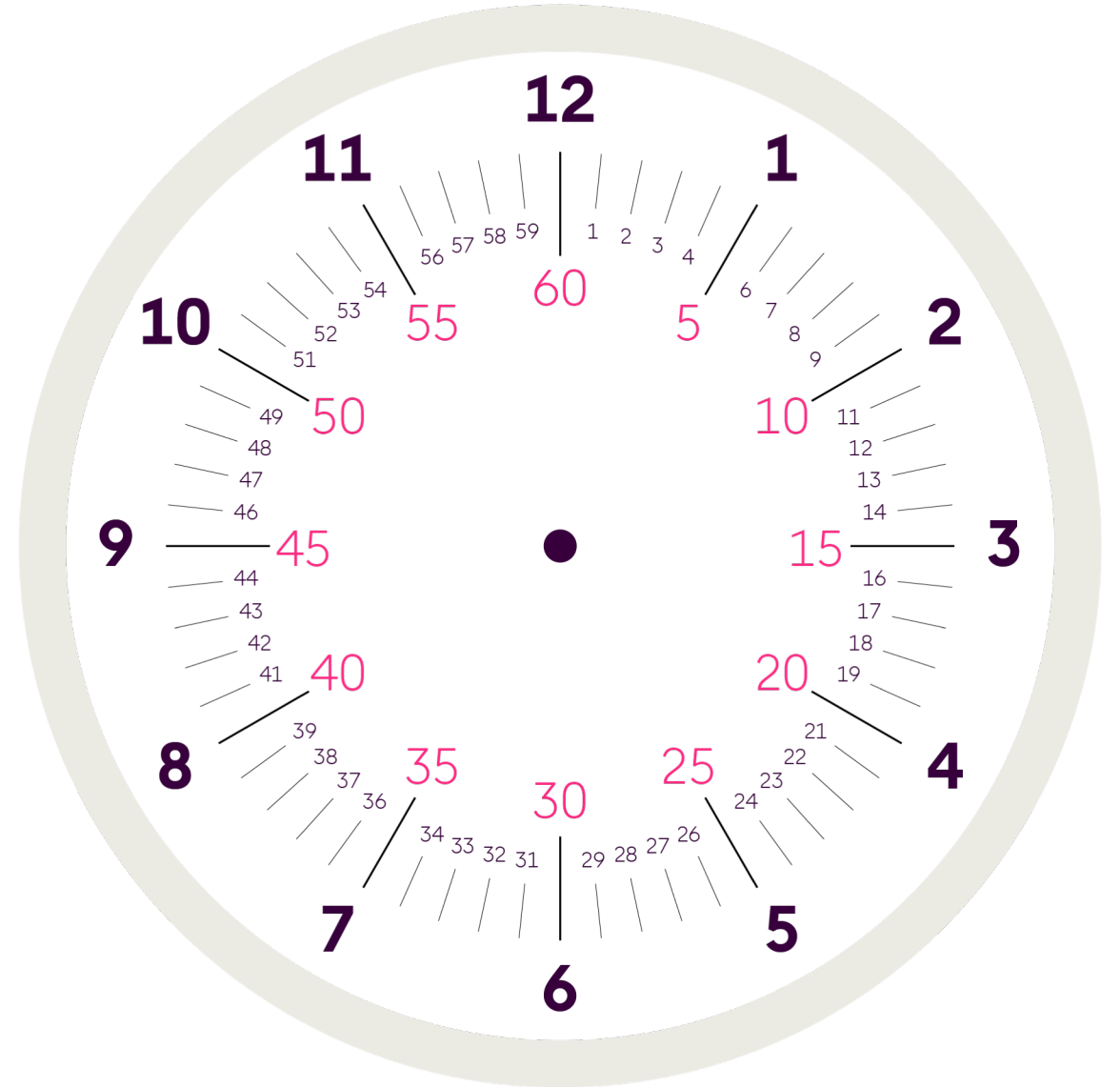
Level 1

Being able to calculate with time is an important part of football!

Practise calculating with time. Answer the questions on a piece of paper, making sure you show your working.

Use the blank clock face like a number line to help you work out each answer.

You can use the **Calculating with time in football: The Maths** presentation to help you understand how to do this.

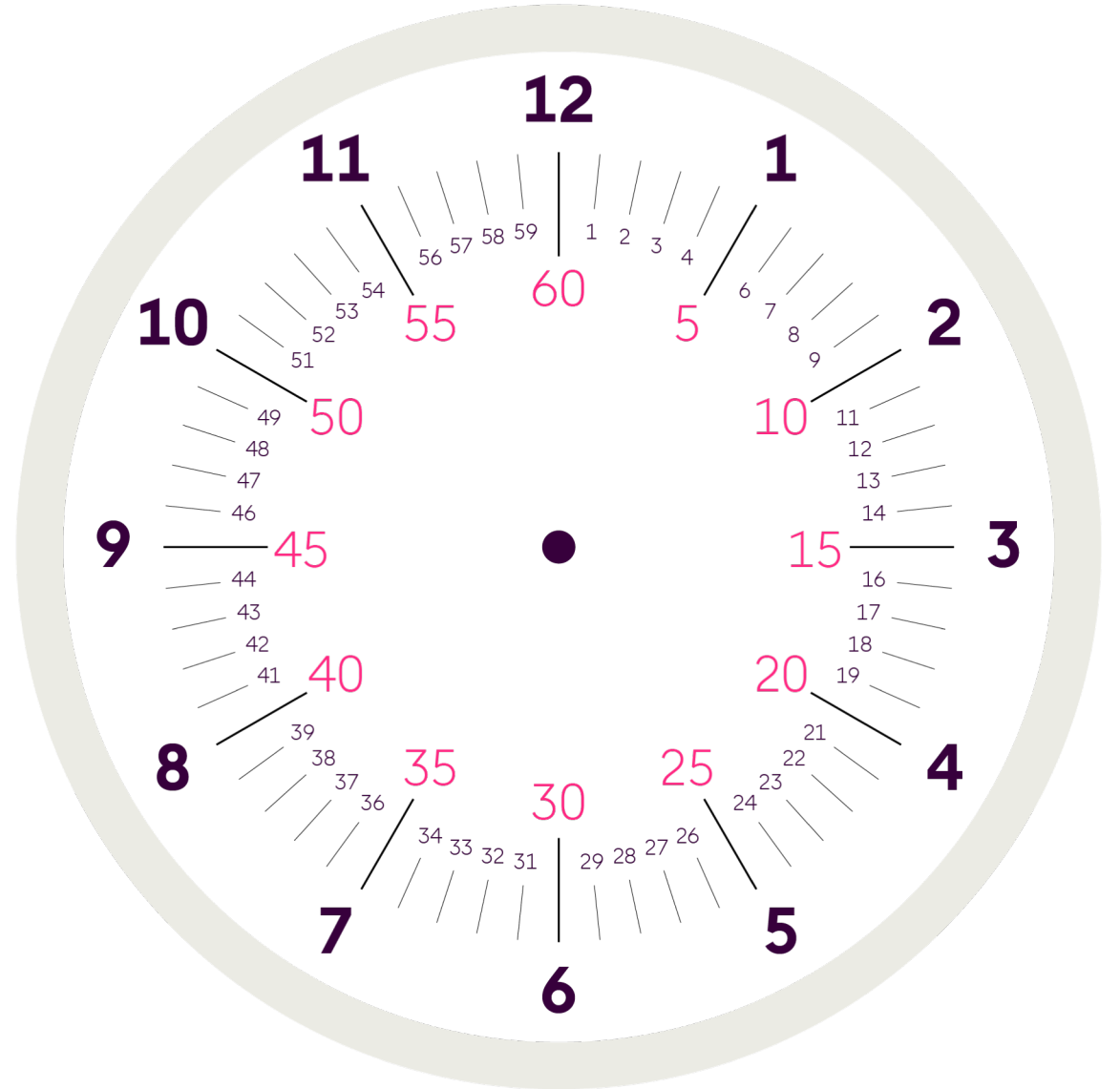




Q1.

Use the blank clock face like a number line to help you work out each answer.

- a) 14 minutes + 23 minutes
- b) 6 minutes + 19 minutes
- c) 36 minutes + 24 minutes
- d) 42 minutes + 34 minutes
- e) 39 minutes + 56 minutes
- f) 19 minutes + 31 minutes + 27 minutes
- g) 36 minutes + 42 minutes + 51 minutes





Q2.

During a football match,
Harry Kane plays 86 minutes
of the match.

How long is this in hours
and minutes?



Kick-off

Half-time

Full-time





Q3.

Harry Wilson plays 75 minutes of the match.

How long is this in hours and minutes?



Kick-off



Half-time

Full-time



Q4.

How long do Harry Kane and Harry Wilson play in total?

Harry Kane	86 minutes
Harry Wilson	75 minutes



Full time!

Answers

- **Q1.**
 - a) 14 minutes + 23 minutes = **37 minutes**
 - b) 6 minutes + 19 minutes = **25 minutes**
 - c) 36 minutes + 24 minutes = **60 minutes**
or **1 hour**
 - d) 42 minutes + 34 minutes = **76 minutes**
or **1 hour 16 minutes**
 - e) 39 minutes + 56 minutes = **95 minutes**
or **1 hour 35 minutes**
 - f) 19 minutes + 31 minutes + 27 minutes
= **77 minutes** or **1 hour 17 minutes**
 - g) 36 minutes + 42 minutes + 51 minutes
= **129 minutes** or **2 hours 9 minutes**
- **Q2.** 1 hour 26 minutes
- **Q3.** 1 hour 15 minutes
- **Q4.** $86 + 75 = 161$ minutes or 2 hours 41 minutes

Calculating with time in football

Level 2

Maths resource

Upper KS2: Ages 9-11

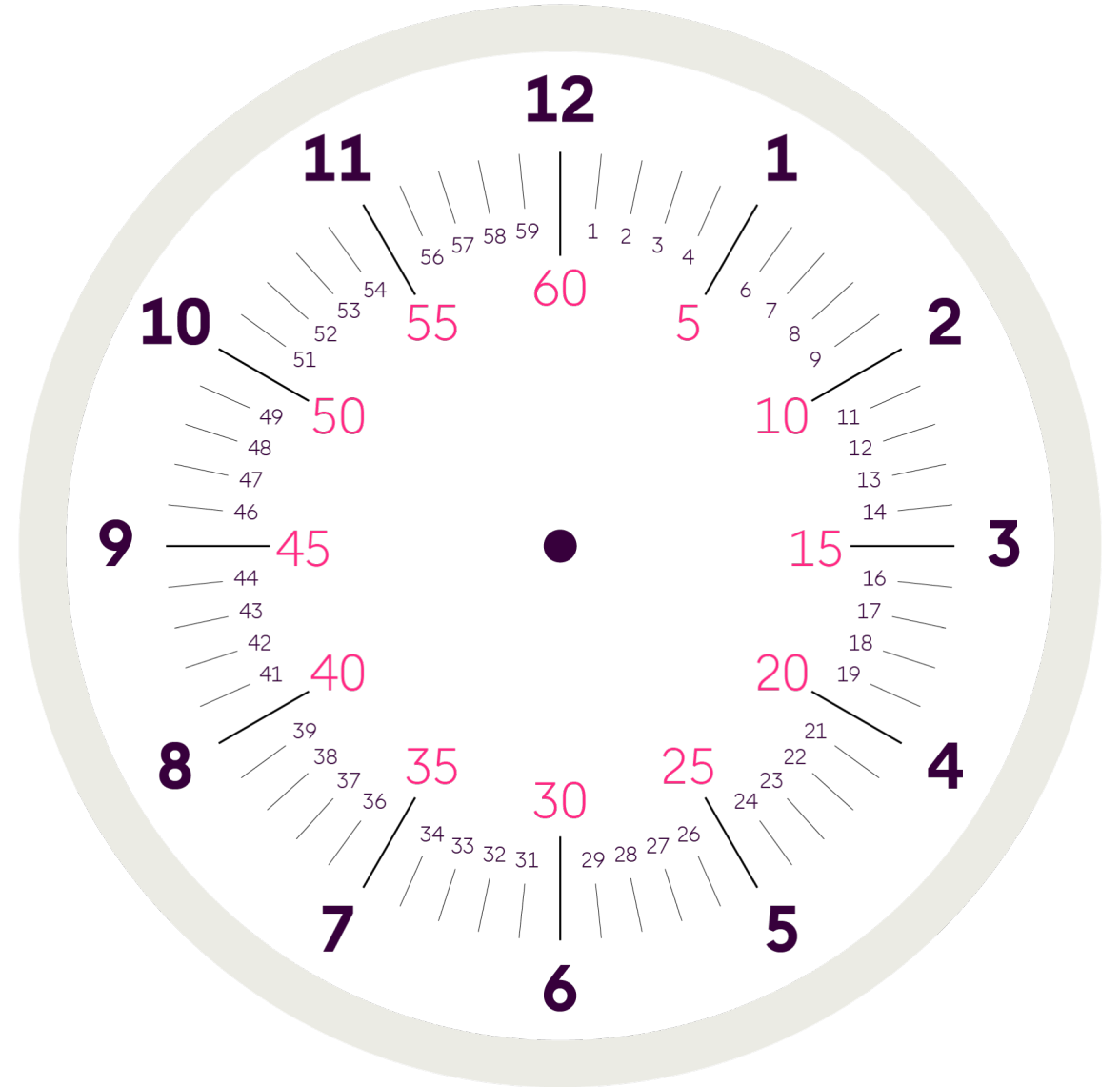
Level 2

Being able to calculate with time is an important part of football!

Practise calculating with time. Answer the questions on a piece of paper, making sure you show your working.

Use the blank clock face like a number line to help you work out each answer.

You can use the **Calculating with time in football: The Maths** presentation to help you understand how to do this.



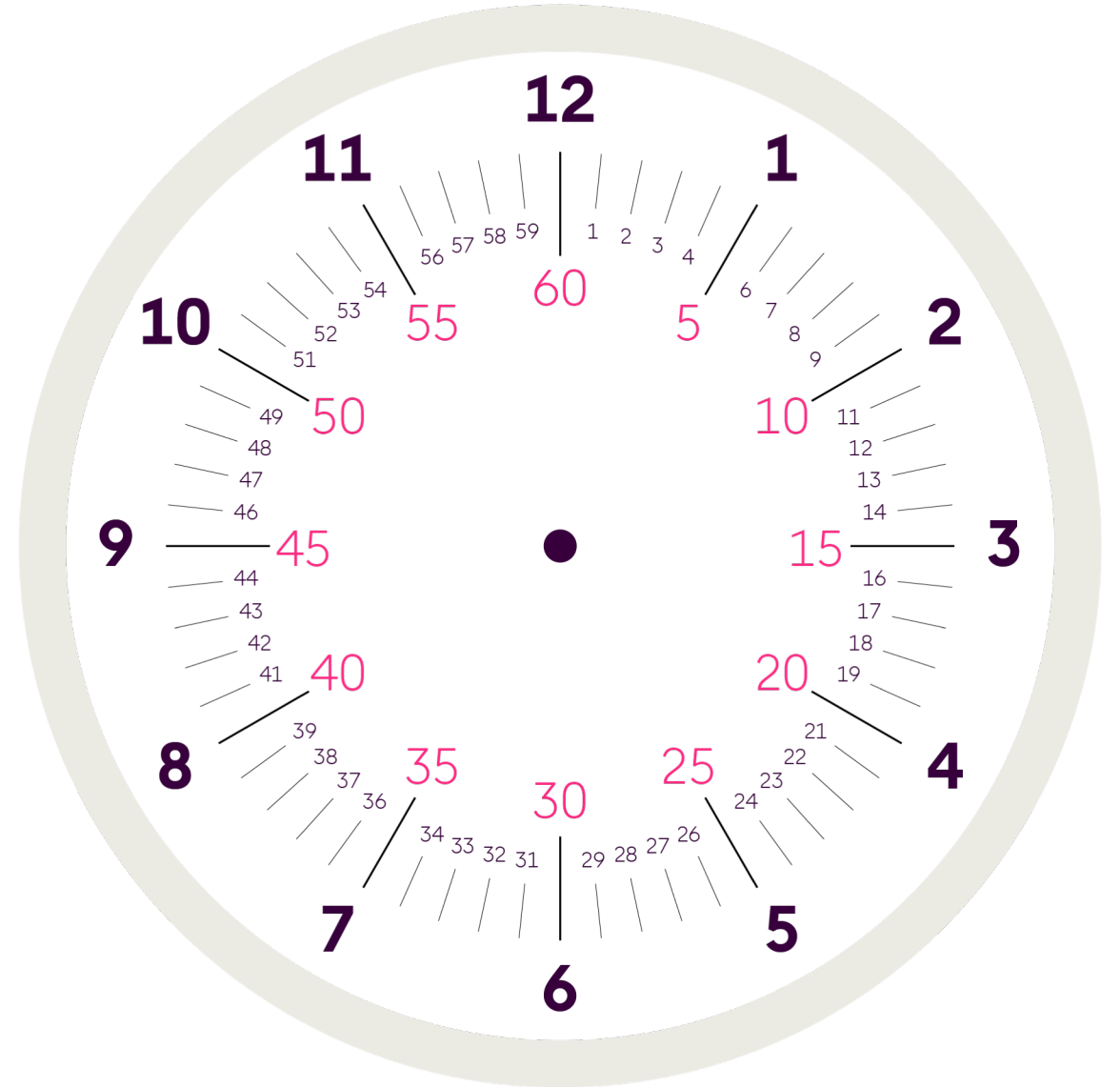


Q1.

Use the blank clock face like a number line to help you work out each answer.

How much time is there between:

- 17 minutes and 29 minutes?
 - 12 minutes and 51 minutes?
 - 47 minutes and 1 hour 15 minutes?
- d) Which is the biggest time difference?
- 35 minutes and 1 hour 15 minutes
 - 26 minutes and 1 hour 10 minutes





Q2.

During a football match, Arsenal score in the 15th minute. West Ham United score in the 32nd minute.

How many minutes are between the two goals?



Kick-off

Half-time

Full-time





Q3.

Watford score a goal in 10 minutes. One of their players gets a yellow card after 21 minutes.

How much time passes between the goal and the yellow card?



Kick-off



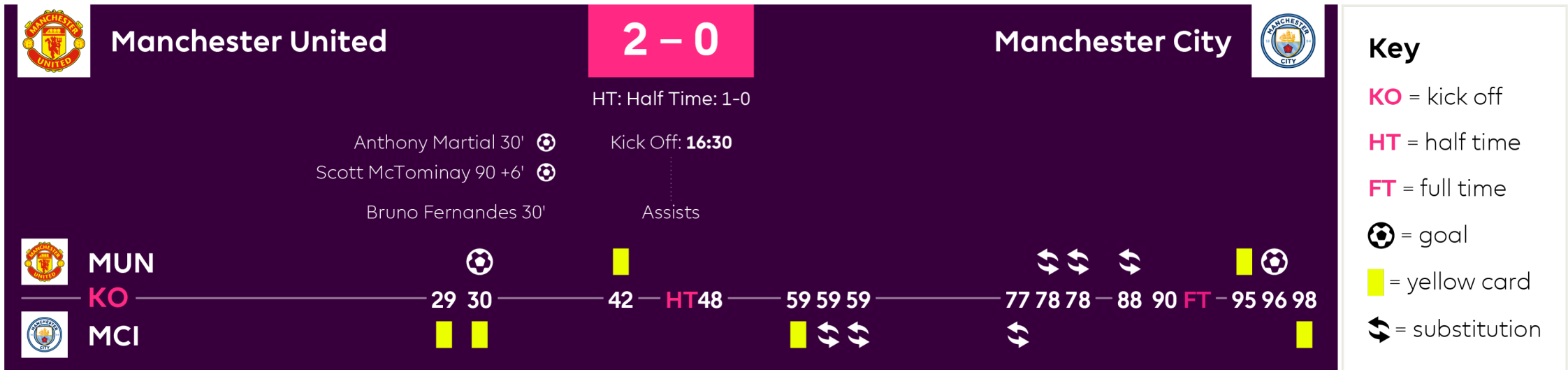
Half-time

Full-time

? Q4.

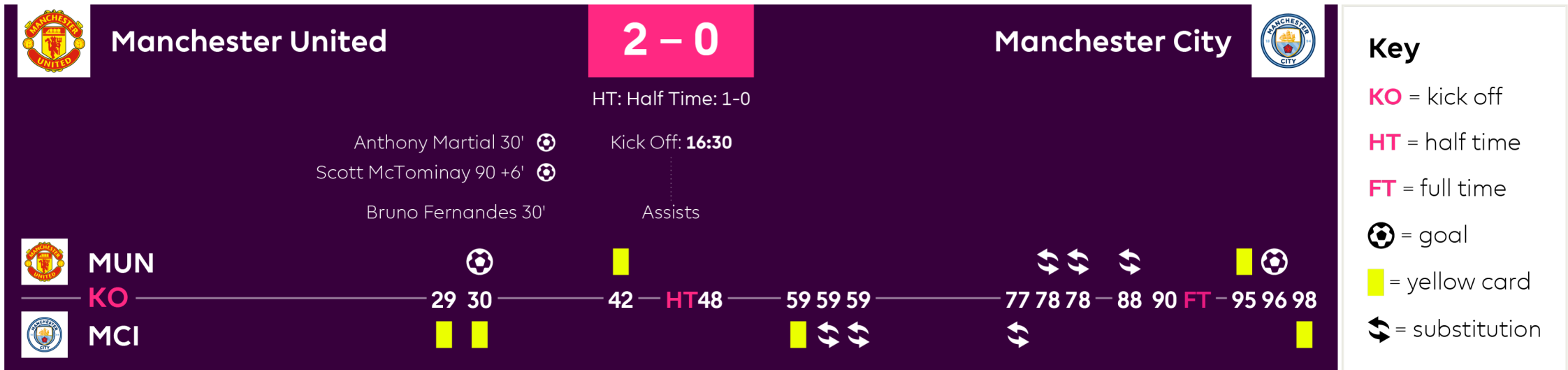
Look at the information about the Manchester United versus Manchester City game.

How much time is there between Manchester United's first and last goal?



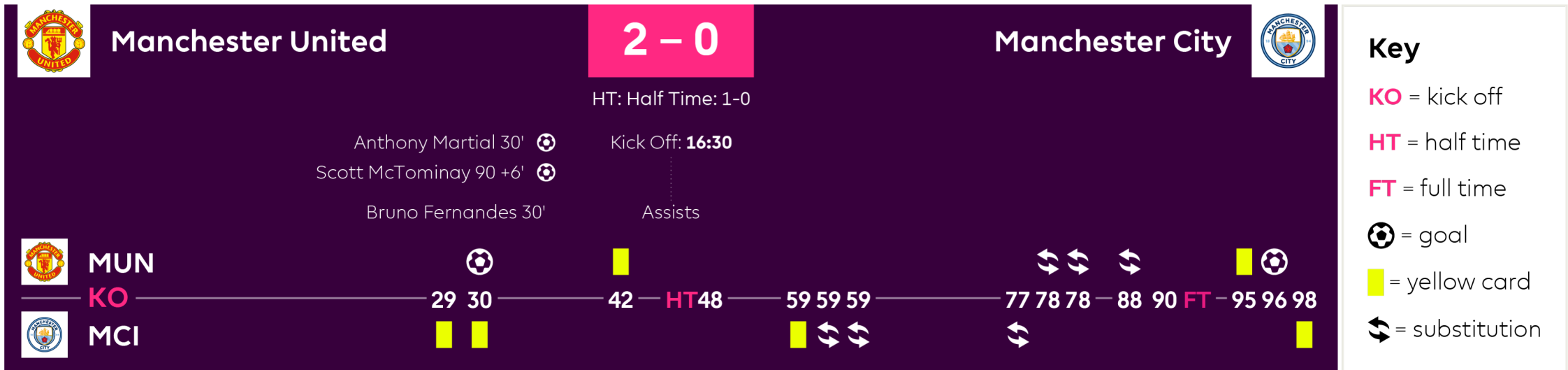
? Q5.

How much time passes between the first goal and half time?



? Q6.

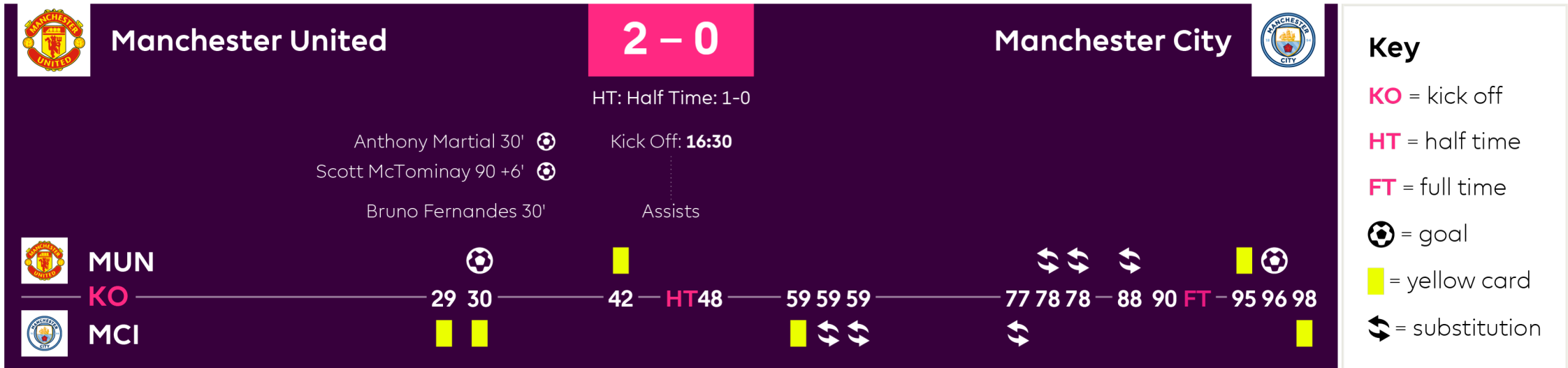
Looking at the timeline, after half-time how much time did the teams have to score a winner before the final whistle?



? Q7.

What is the longest interval of time:

- Between kick off and the first goal
- Between the first goal and half-time
- Between half-time and the second goal



Answers

- **Q1.**
 - a) 12 minutes
 - b) 39 minutes
 - c) 28 minutes
 - d) 40 minutes < 44 minutes,
so the second interval is greater
- **Q2.** 17 minutes
- **Q3.** 11 minutes
- **Q4.** 66 minutes
- **Q5.** 18 minutes
- **Q6.** 50 minutes
- **Q7.** Between half-time and the second goal
(48 minutes)

Calculating with time in football

Level 3

Maths resource

Upper KS2: Ages 9-11

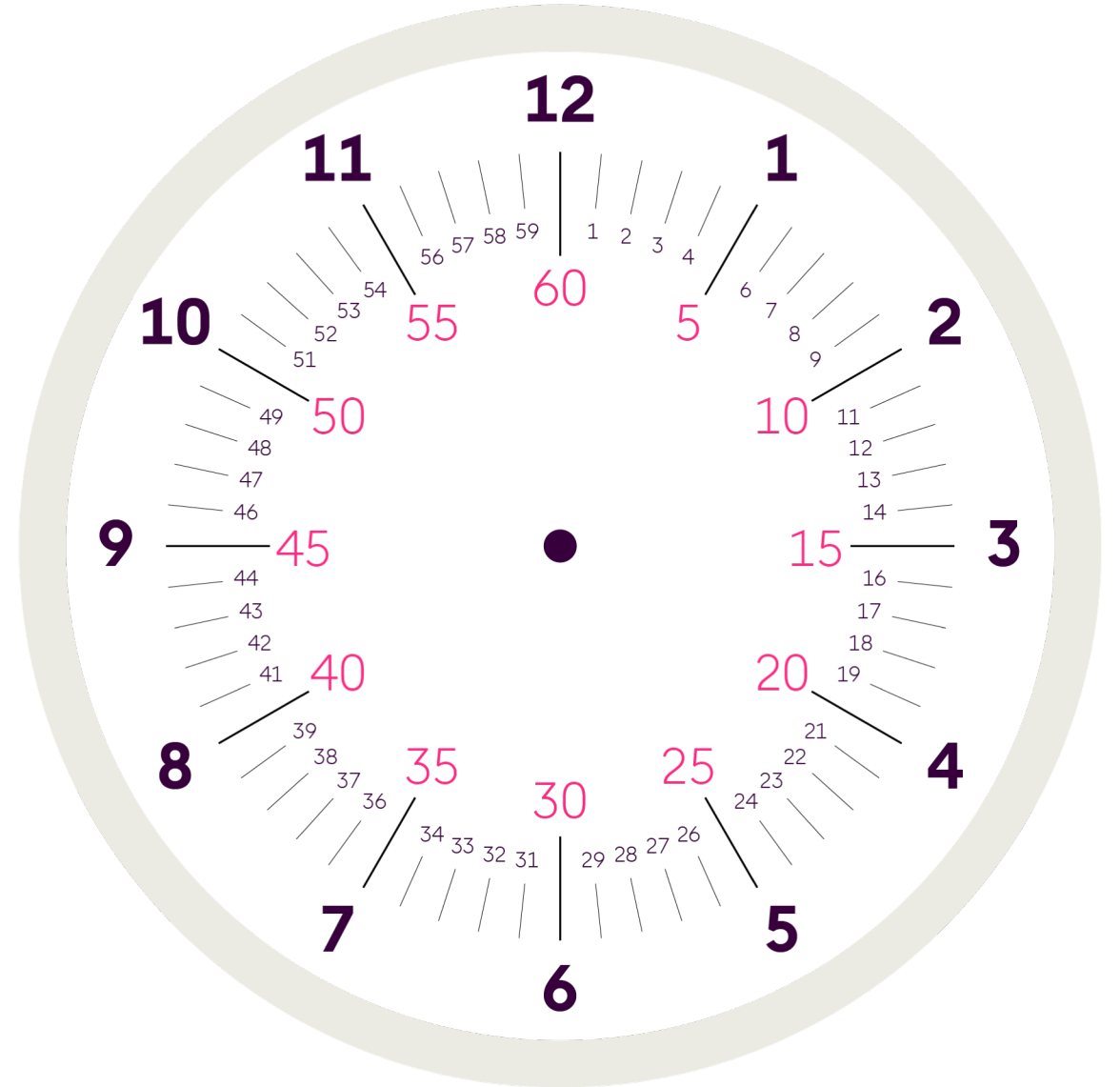
Level 3

Being able to calculate with time is an important part of football!

Practise calculating with time. Answer the questions on a piece of paper and make sure you show your working.

Use the blank clock face like a number line to help you work out each answer.

You can use the **Calculating with time in football: The Maths** presentation to help you understand how to do this.

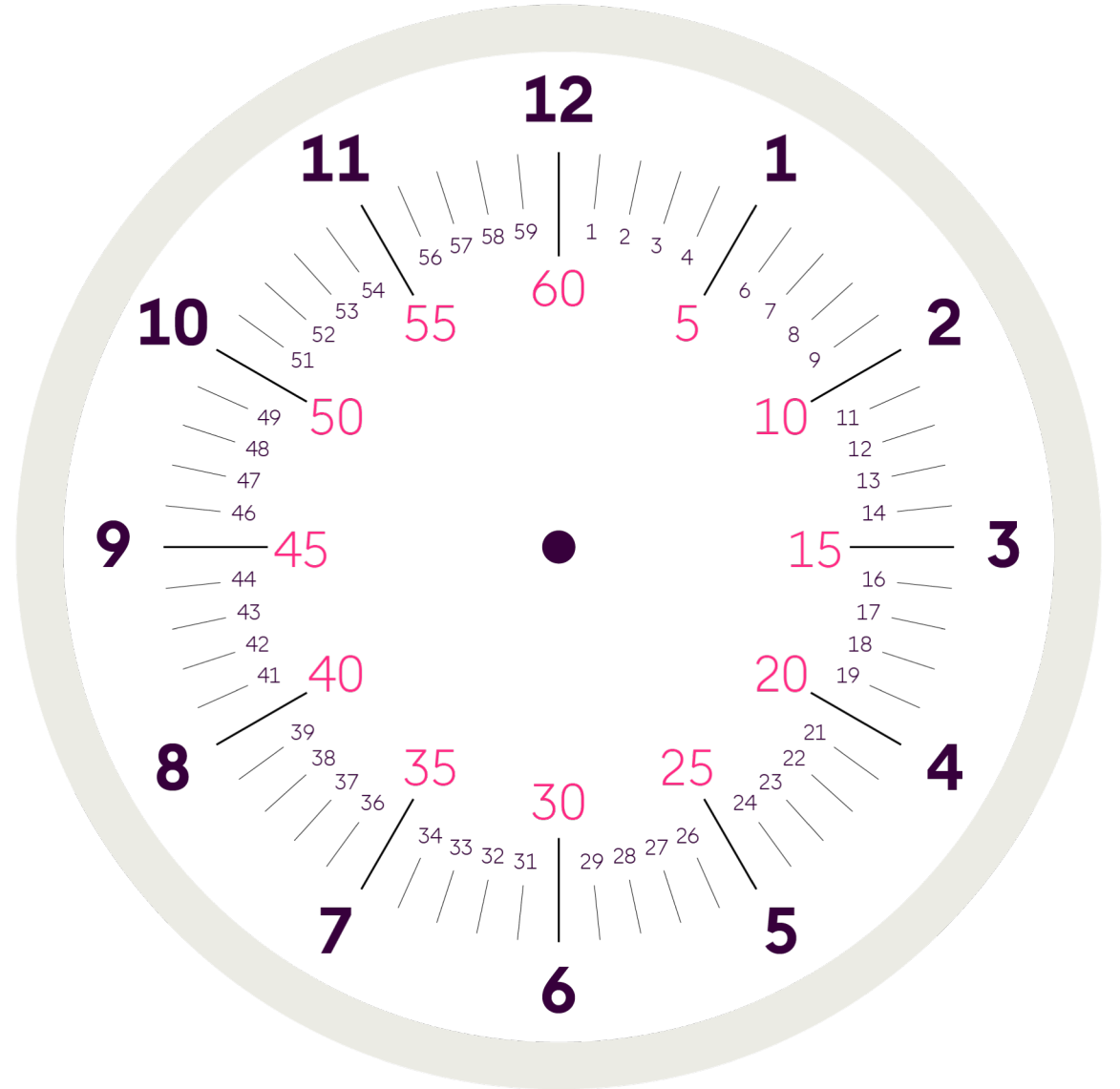




Q1.

Use the blank clock face like a number line to help you work out each answer.

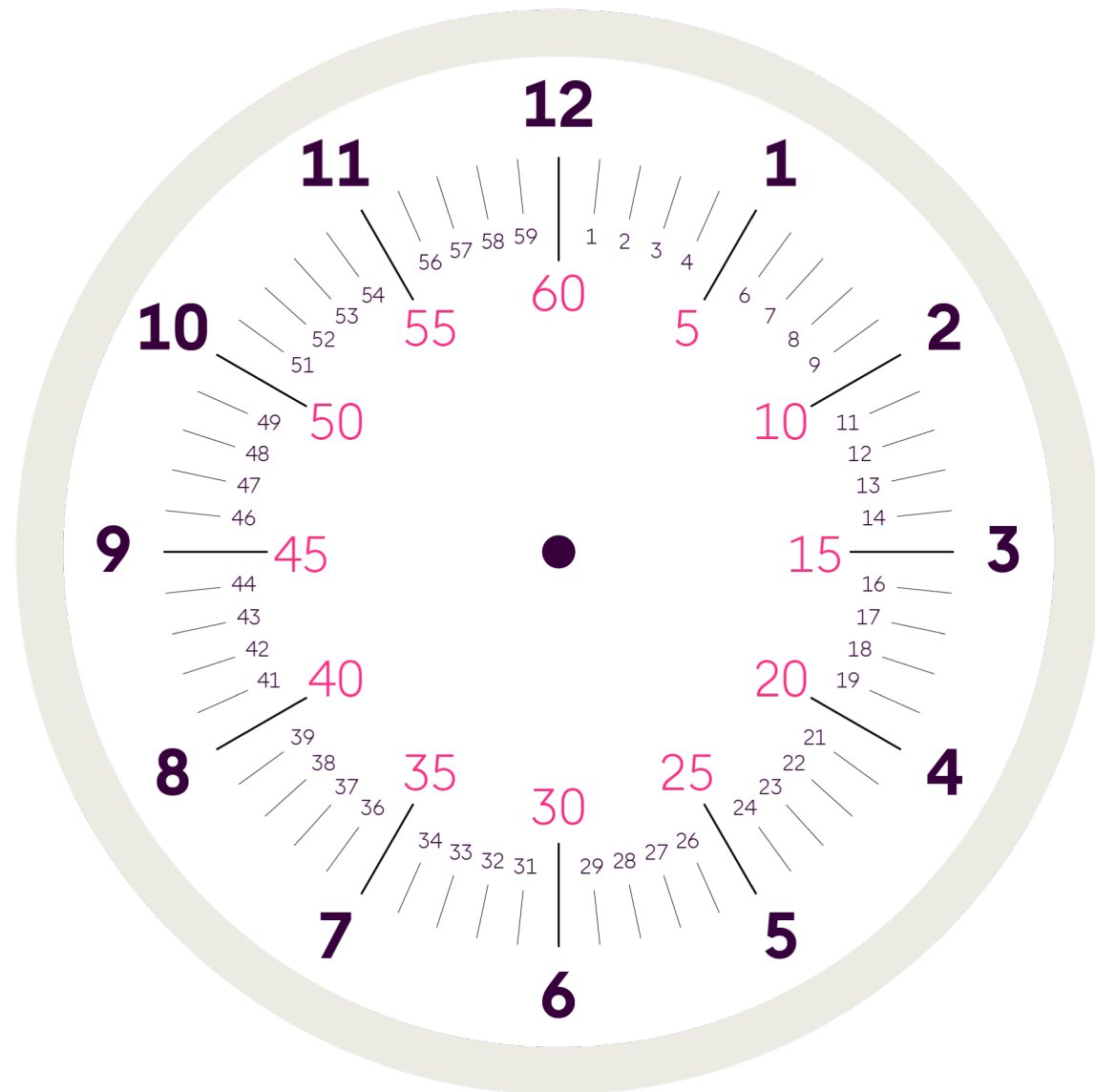
- What is 12:30pm + 22 minutes?
- How much time is there between 9:25am and 9:56am?
- What is 2:45pm + 36 minutes?
- How much time is there between 3:25pm and 5:15pm?





Q2.

How much time does it take you to get to the stadium for a match if you leave at 11:15am and arrive at 2:35pm?





Q3.

A football match starts at 12:30pm.
The first half is 45 minutes long.

When is the half time whistle blown?



Half-time!



Q4.

Another match kicks off at 3:00pm.

There is an injury in the first half
and four minutes are added on.

When is the half time whistle blown?



**4 minutes
added time!**



Q5.

The half-time whistle for a match is blown at 6:18pm.

There were three minutes of added time.

At what time was kick-off?





Q6.

A match will kick off at 20:00.

**Football matches last 90 minutes,
and there is a 10 minute break
between the two halves.**

**What time is the match due
to finish?**





Q7.

A football match started at 3:00pm.

The match was 90 minutes long.

**At half-time there was a ten
minute break.**

**Two minutes were added to the
first half and four minutes were
added to the second half.**

What time did the match finish?



Answers

- **Q1.**
 - a) 12:52pm
 - b) 31 minutes
 - c) 3:21pm
 - d) 1 hour 50 minutes
- **Q2.** 3 hours 20 minutes
- **Q3.** 1:15pm
- **Q4.** 3:49pm
- **Q5.** 5:30pm
- **Q6.** 21:40
- **Q7.** 4:46pm