



# Question Mark, Exclamation Mark or Full Stop?



Cut and paste a question mark, exclamation mark or full stop in the box to finish off the sentence correctly.

a) Would you like to go for a walk



b) Sarah went to school



c) Be careful



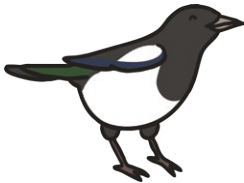
d) What time does the party start



e) I'm so excited



f) The bird was singing in the tree





**g)** How much money did you save



**h)** Alex likes to play football



**i)** Congratulations Sam





2. Now write your own question to go with this picture.

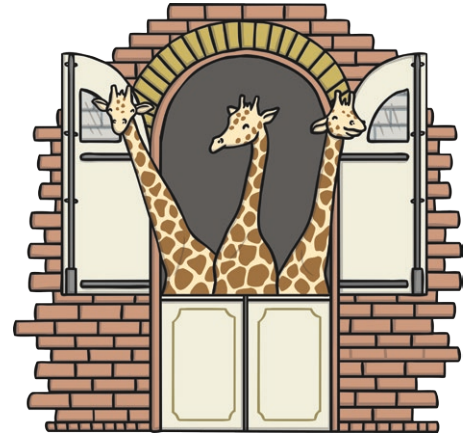
---

---

---

---

---





# Question Mark, Exclamation Mark or Full Stop? Answers

- a)** Would you like to go for a walk?
  - b)** Sarah went to school.
  - c)** Be careful!
  - d)** What time does the party start?
  - e)** I'm so excited!
  - f)** The bird was singing in the tree.
  - g)** How much money did you save?
  - h)** Alex likes to play football.
  - i)** Congratulations Sam!
- 2.** At teacher's discretion.