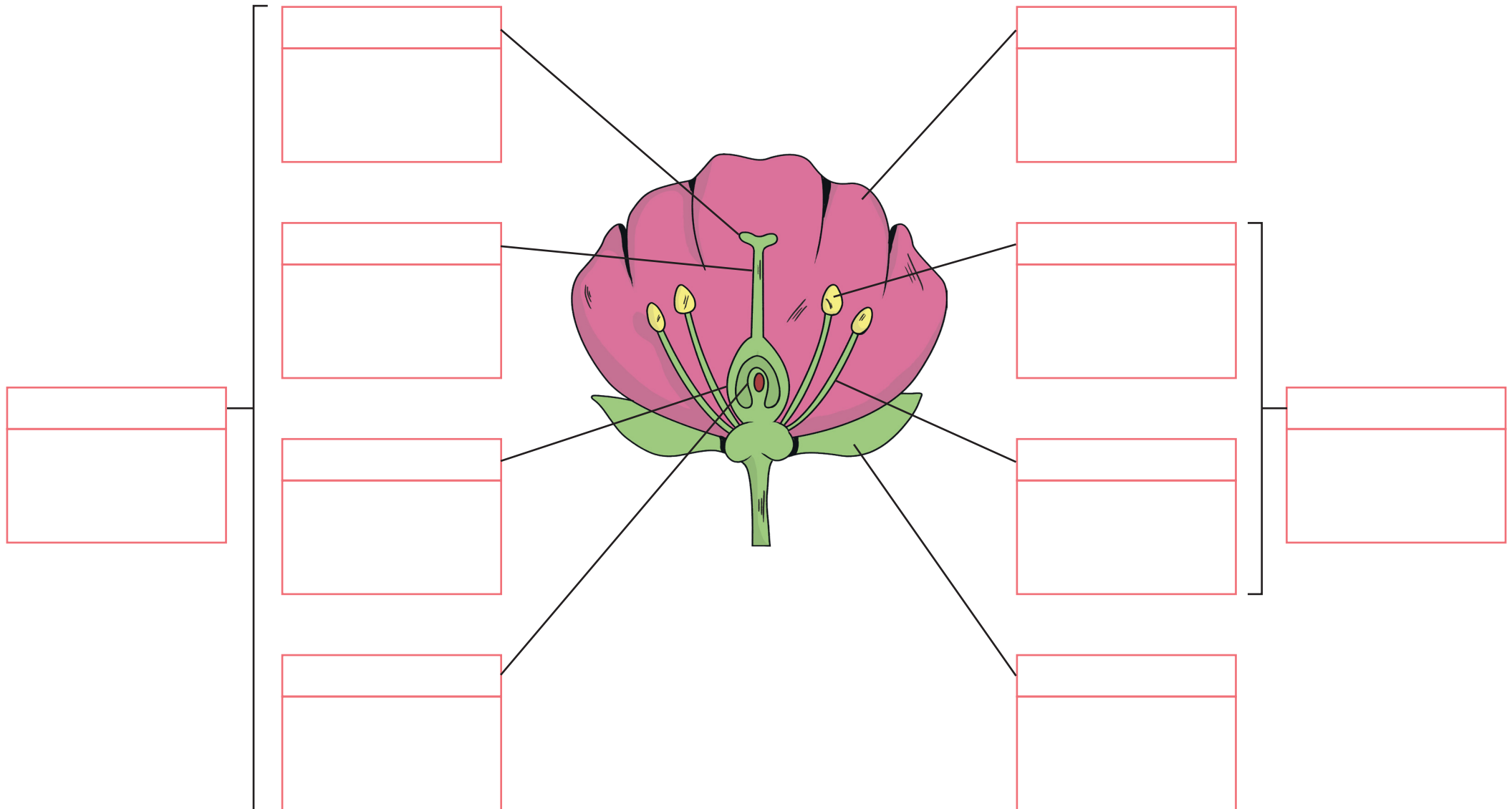


Structure of a Flower **Cut and Stick**

Label the parts of the flower.



Structure of a Flower **Cut and Stick**

Cut out the names and functions of the parts of a flower. Then stick them in the correct place on the diagram.

anther	carpel	filament	ovary	ovule
petal	sepal	stamen	stigma	style
A pollen tube grows through this towards the ovary.	Develops into a seed after fertilisation.	Has a sticky surface to collect pollen grains.	May be brightly coloured to attract insects.	Produces female sex cells (eggs).
Produces male sex cells (pollen grains).	Protects the unopened flower.	Supports the anther.	This is the female part of the flower.	This is the male part of the flower.

Structure of a Flower **Cut and Stick Answers**

