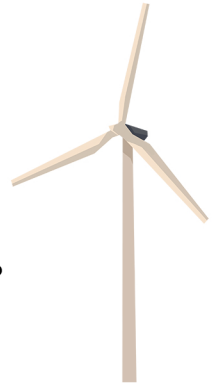




What is renewable and non-renewable energy?



Brief: Design a vehicle powered by renewable energy.

Draw your vehicle below. What does your vehicle need?

- To be powered by **renewable energy**; this can include **solar**, **wind**, **geothermal** or **hydro-electric** power.
- To either **drive** on land, **fly** in the sky or in space, or to **dive** under water.
- To be able to travel long distances.

