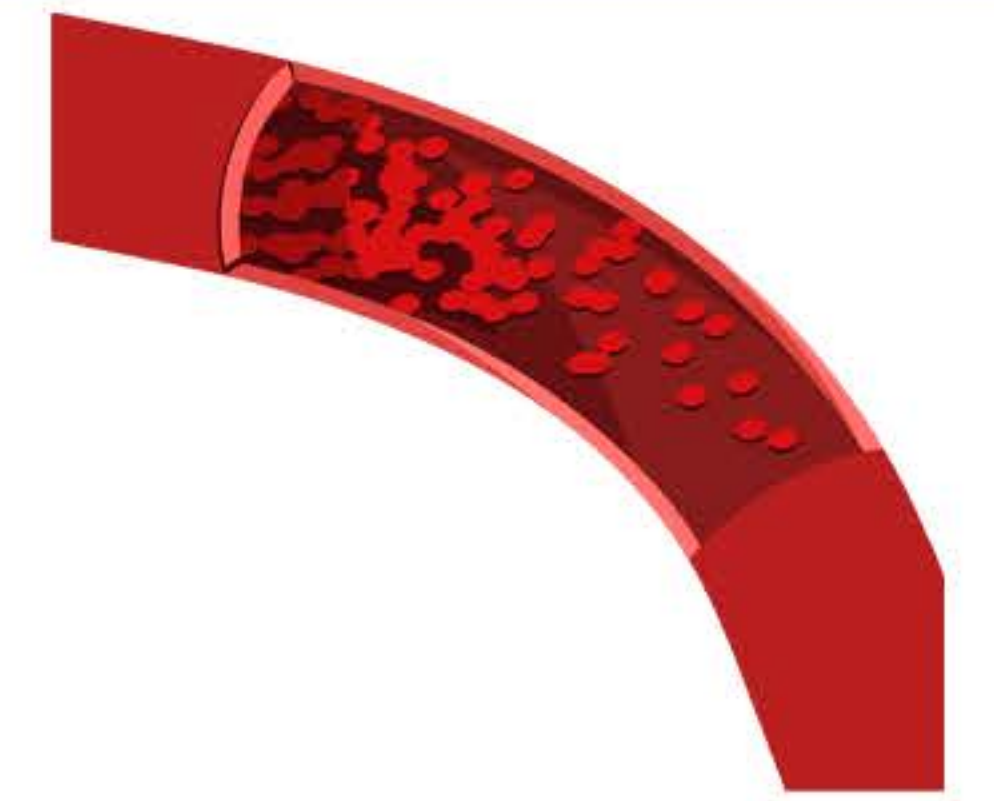
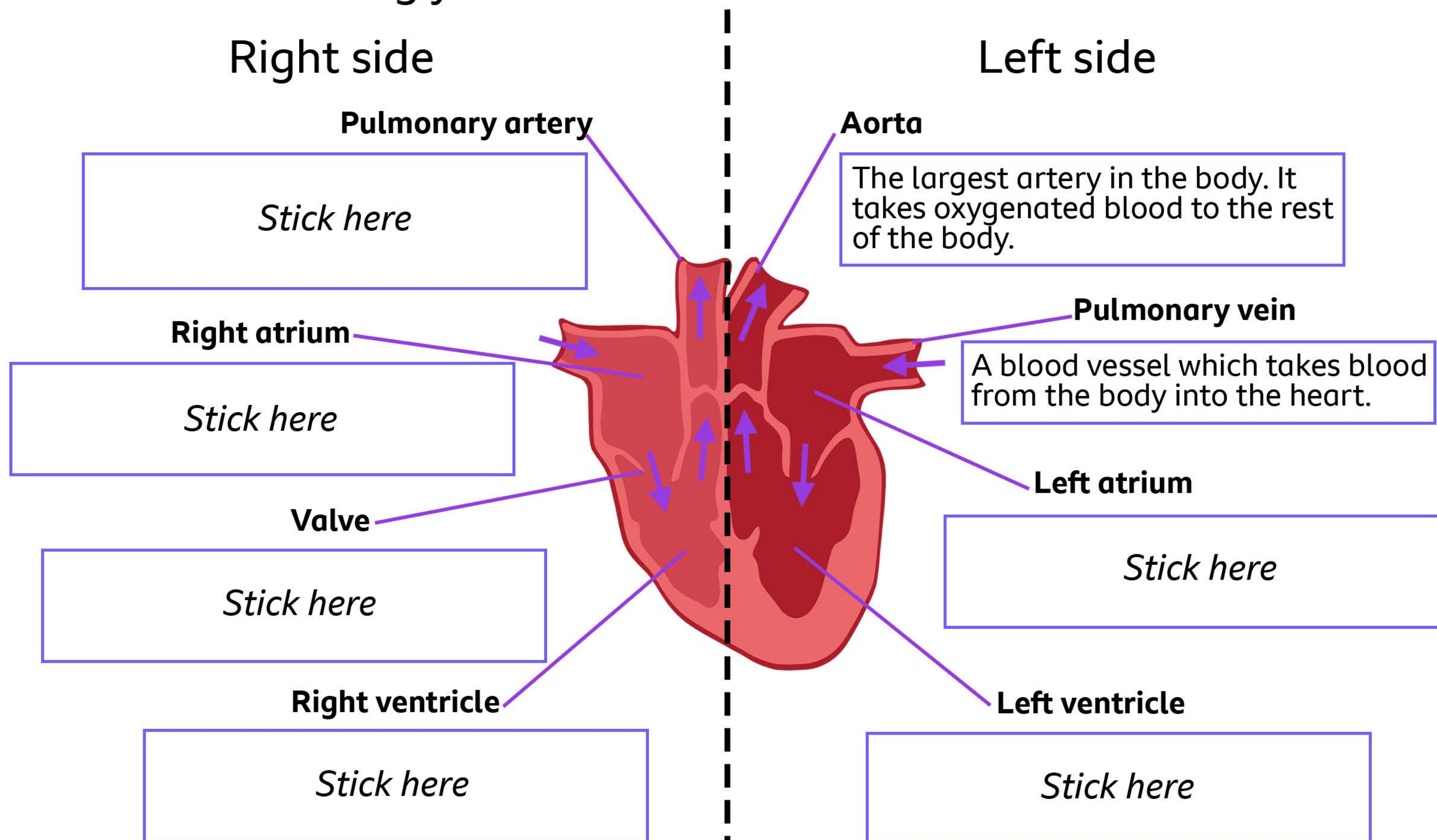


The circulatory system



Cut out the descriptions to the right. Glue them into the correct boxes below, to complete the diagram of the human heart.

Note - the left side and right side of the heart appear reversed as the heart is facing you!



An artery which takes blood to the lungs. Arteries are one of the three blood vessels along with veins and capillaries.

Blood enters the right side of the heart after giving oxygen to the body.

These stop the blood going back the other way. They make the heart a one-way system.

Blood gets a pump here to leave the right side of the heart. It goes to the lungs to pick up oxygen.

Blood enters this side of the heart after collecting oxygen from the lungs.

Blood gets another pump from the heart to carry oxygen to the cells of the body.

